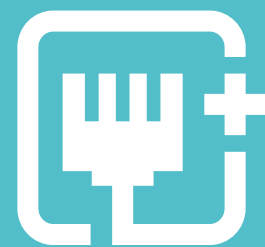




AC2100

Wireless MU-MIMO

VDSL/ADSL Modem Router



Super VDSL
Support 350 Mbps
VDSL Access

Archer VR2100



1733 Mbps + 300 Mbps
AC2100 Dual Band Wi-Fi



4x4
MU-MIMO

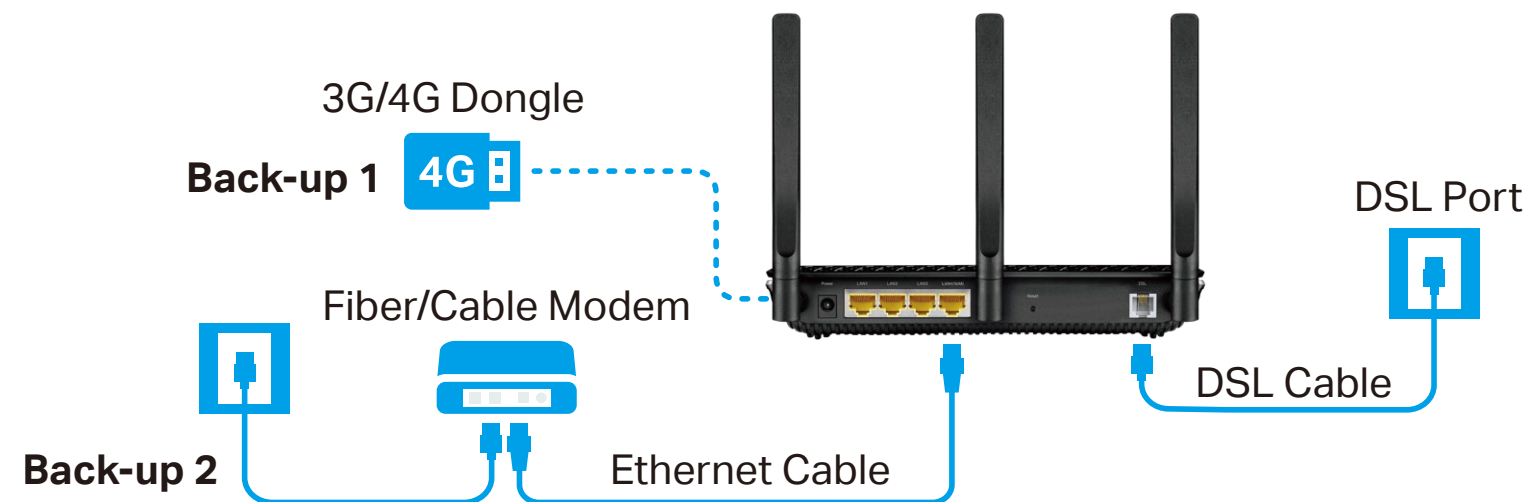


Full Gigabit
Ports

Highlights

Versatile Connectivity

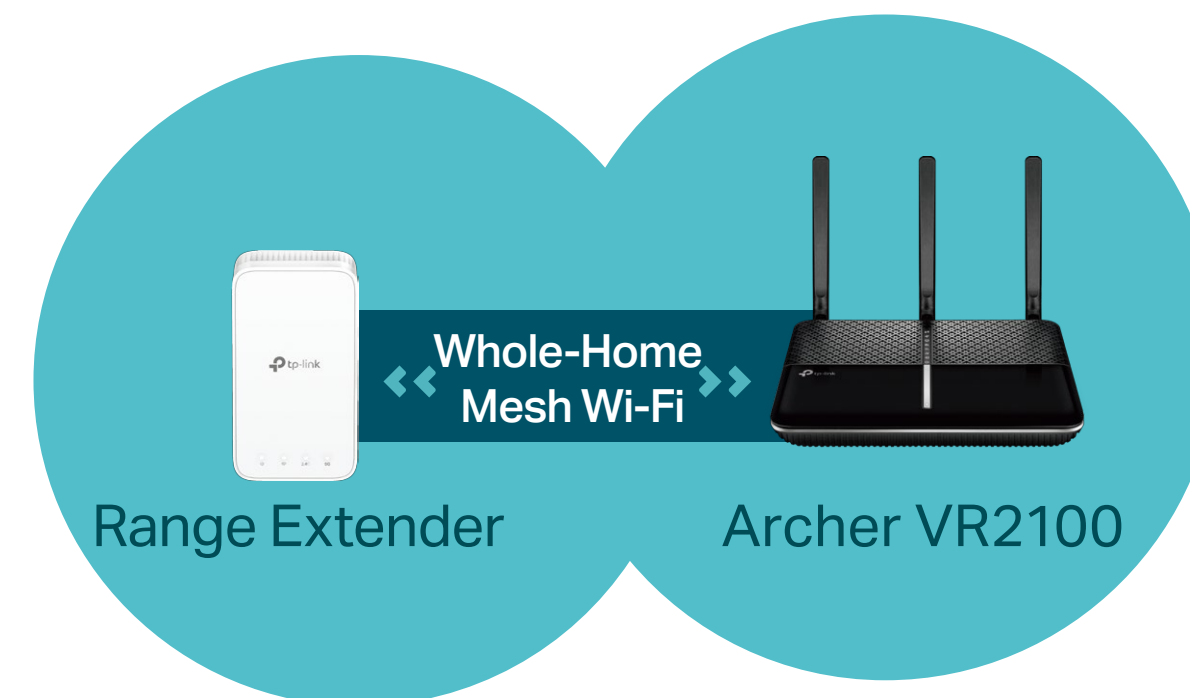
As a powerful DSL modem router, the Archer VR2100 supports super fast VDSL broadband of up to 350 Mbps, as well as a variety of other connection types. The LAN/WAN port accepts connection from Cable Modem or Fiber Modem, and the USB port supports 3G/4G dongle connection for a perfect main or backup internet connection.



Support TP-Link OneMesh™

Co-work with TP-Link OneMesh products, to provide a more flexible and cost-effective Mesh network with a single Wi-Fi name for seamless whole-home coverage.

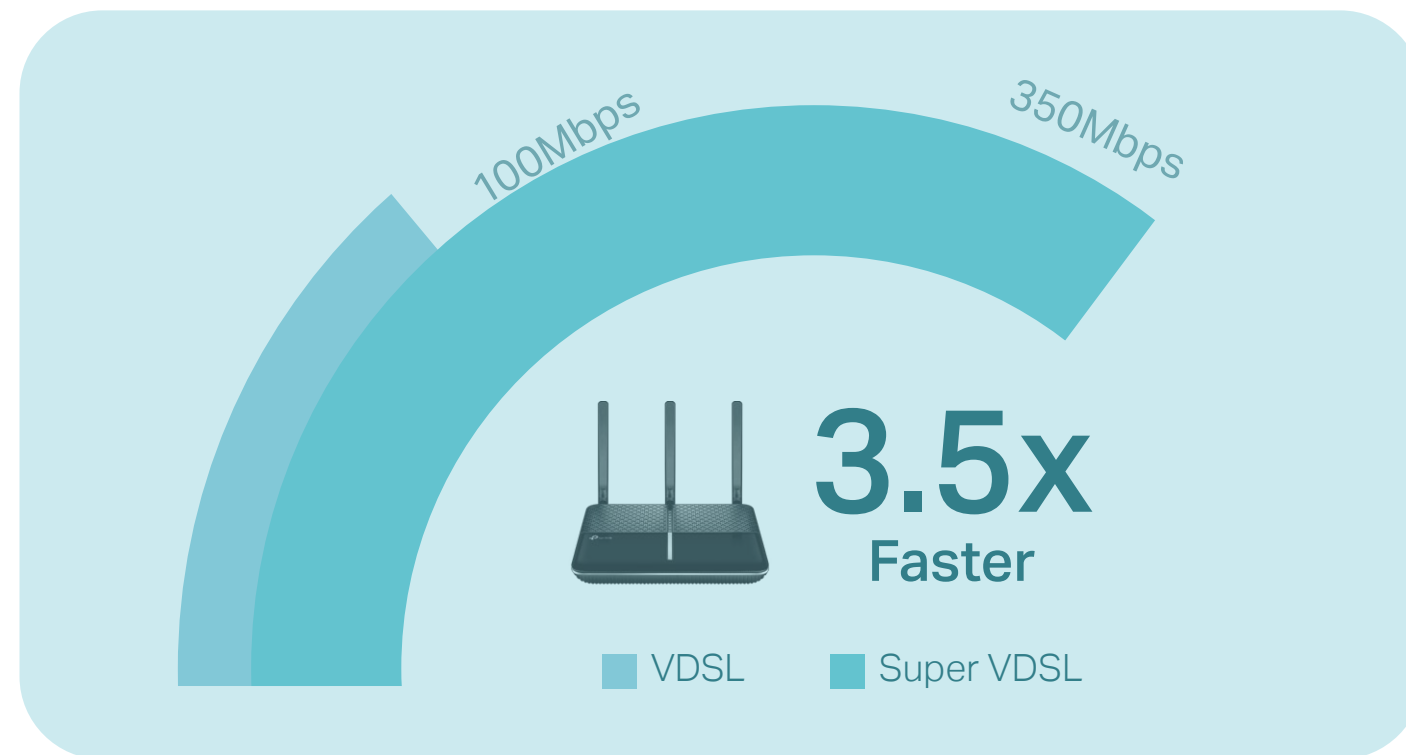
*OneMesh Range Extender or Powerline Adapter sold separately.



Highlights

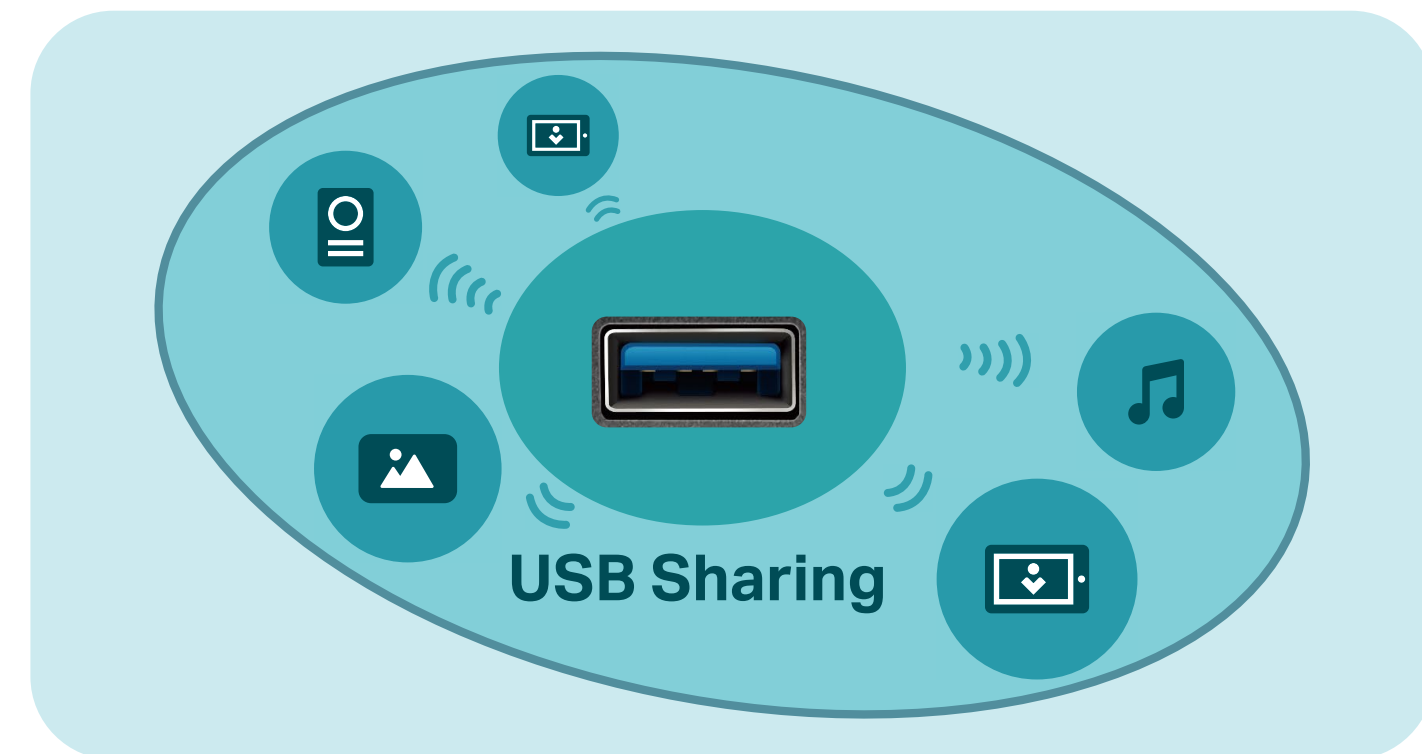
Super VDSL Technology

Super VDSL (VDSL2 Profile 35b) is the next generation of VDSL technology with download speeds up to 350 Mbps. The Archer VR2100 is also backward compatible with the VDSL /ADSL standard and always provides the highest possible speed.



Media Sharing

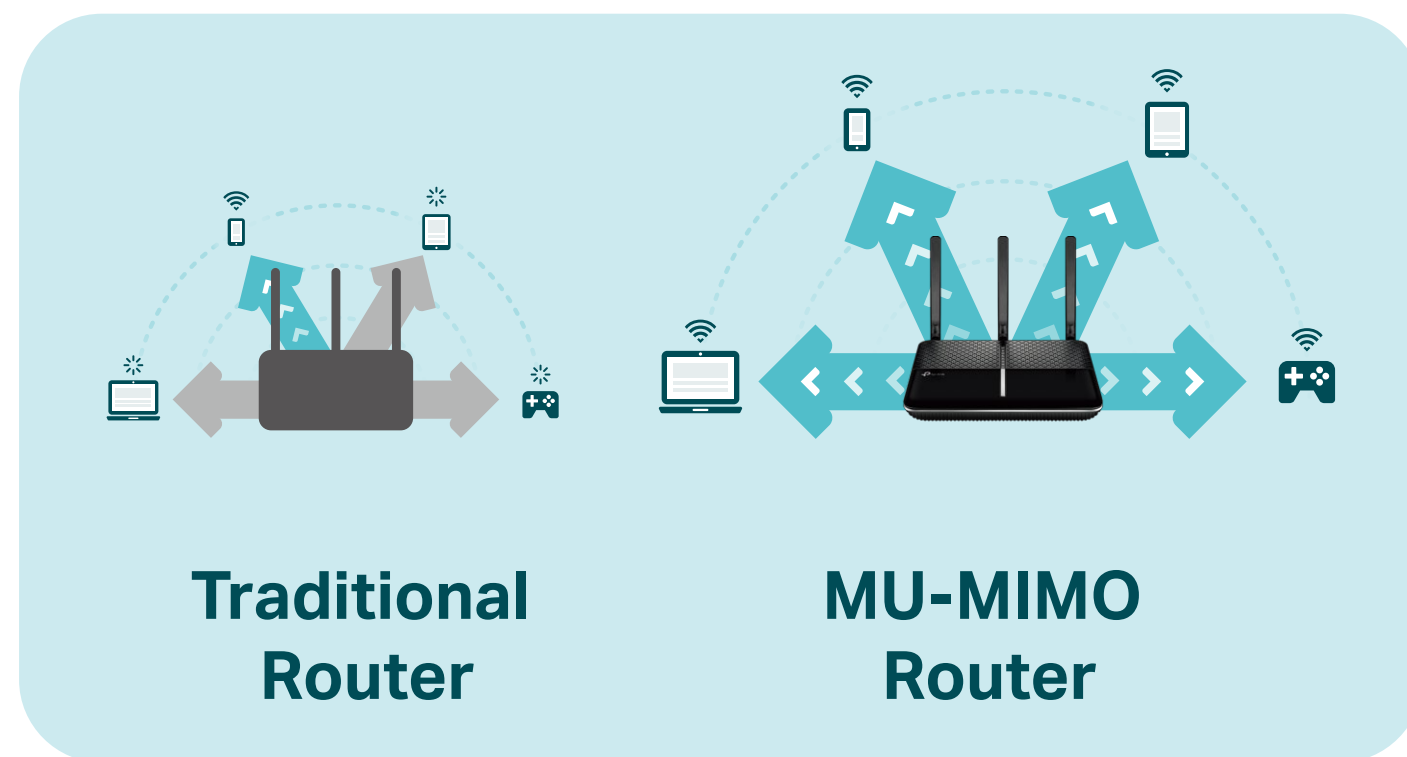
One USB port can connect an external storage device to share files, photos, and videos at high-speed.



Highlights

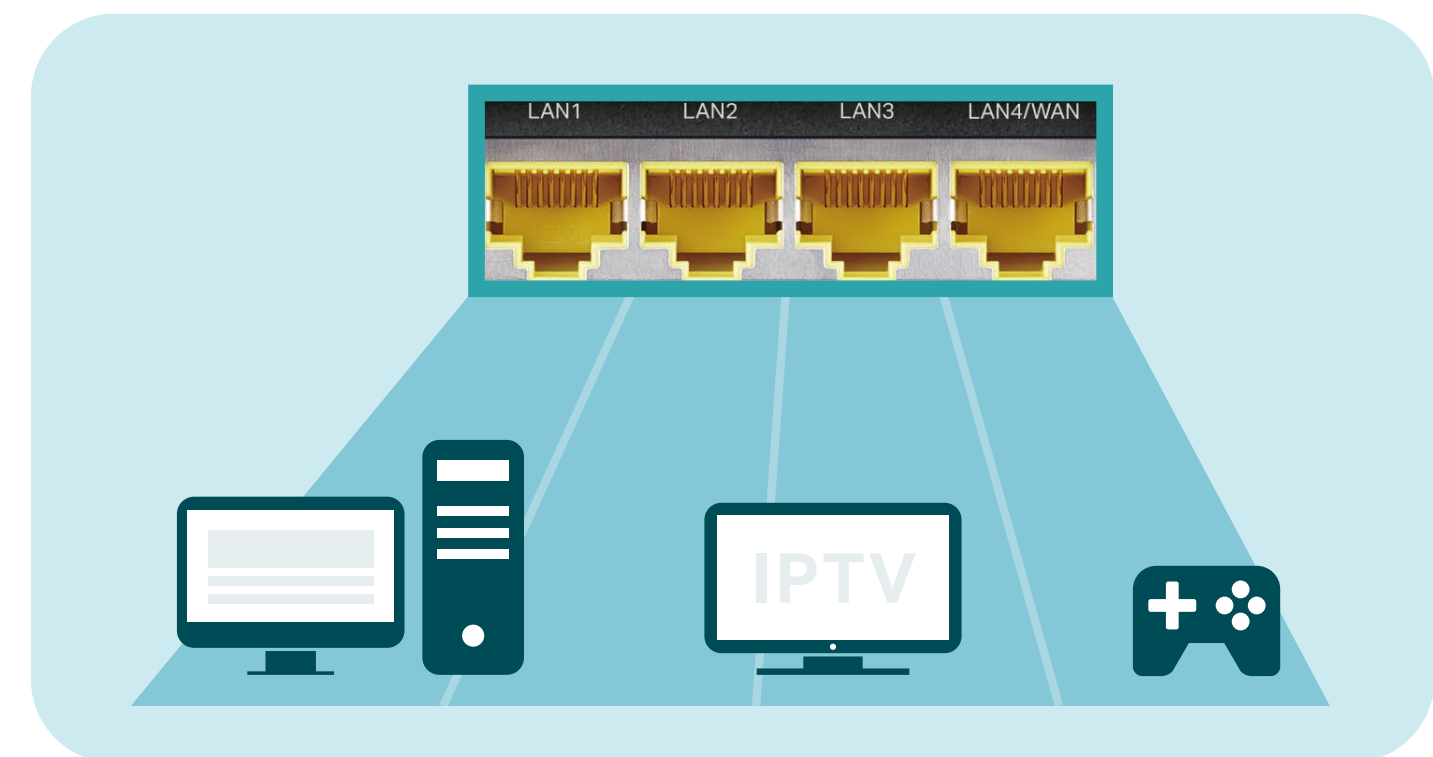
MU-MIMO: Efficient Wi-Fi for Every Device

MU-MIMO technology serves up to four devices at once, reducing wait time, increasing Wi-Fi throughput for every device, and making each stream more efficient.



Full Gigabit Ports

4 Gigabit LAN ports help wired devices achieve peak performance for HD streaming and gaming.

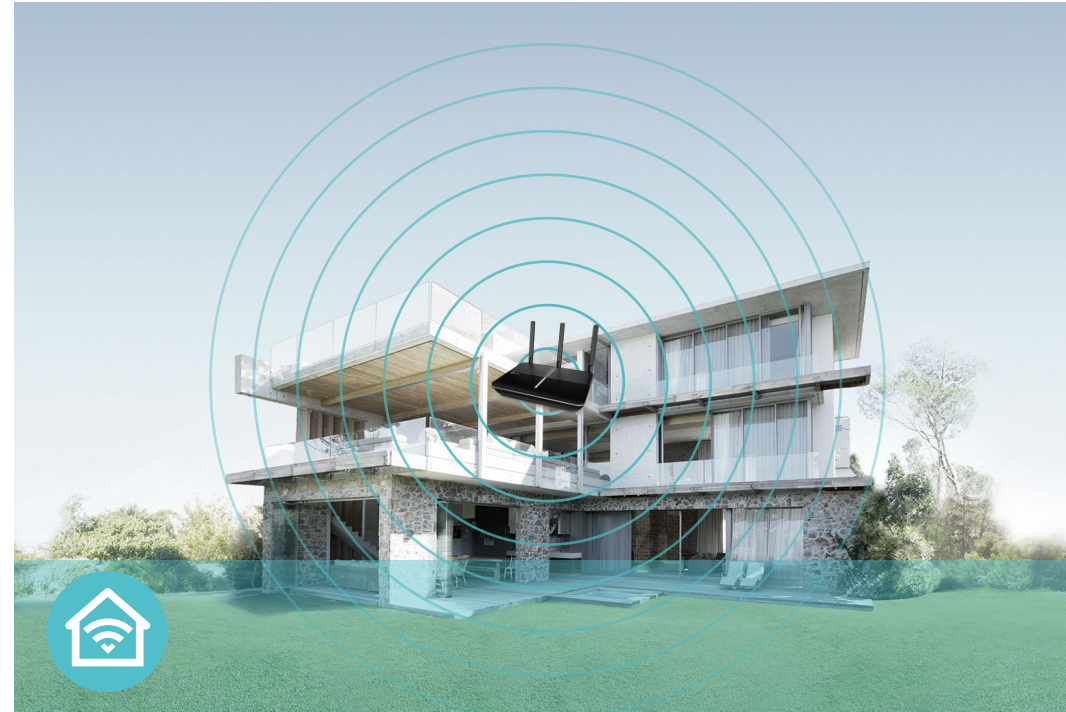


Features



Speed

- **Ultimate Wireless Speed** – Combined wireless speeds of up to 300 Mbps (over 2.4 GHz) and 1733 Mbps (over 5 GHz)
- **Fast Gigabit Ports** – Fast Gigabit ports for rapid, reliable wired connections to computers, TVs and game consoles
- **4 x 4 MU-MIMO Technology** – Simultaneously exchanges data with several devices, achieving speeds which are 4x faster than standard AC routers



Wi-Fi Range

- **Superior Coverage** – 3 external dual band antennas and 1 internal 5 GHz antenna provide superior Wi-Fi coverage all across your home.
- **Wi-Fi with Beamforming** – Beamforming technology locates the connected devices and further improves the range and the signal strength to each mobile device, delivering a more reliable and efficient wireless connection



Reliability

- **Dual Band** – Separate Wi-Fi bands enable more devices to connect to your network without a drop in performance
- **Quality of Service** – Prioritize network traffic by device or application

Features



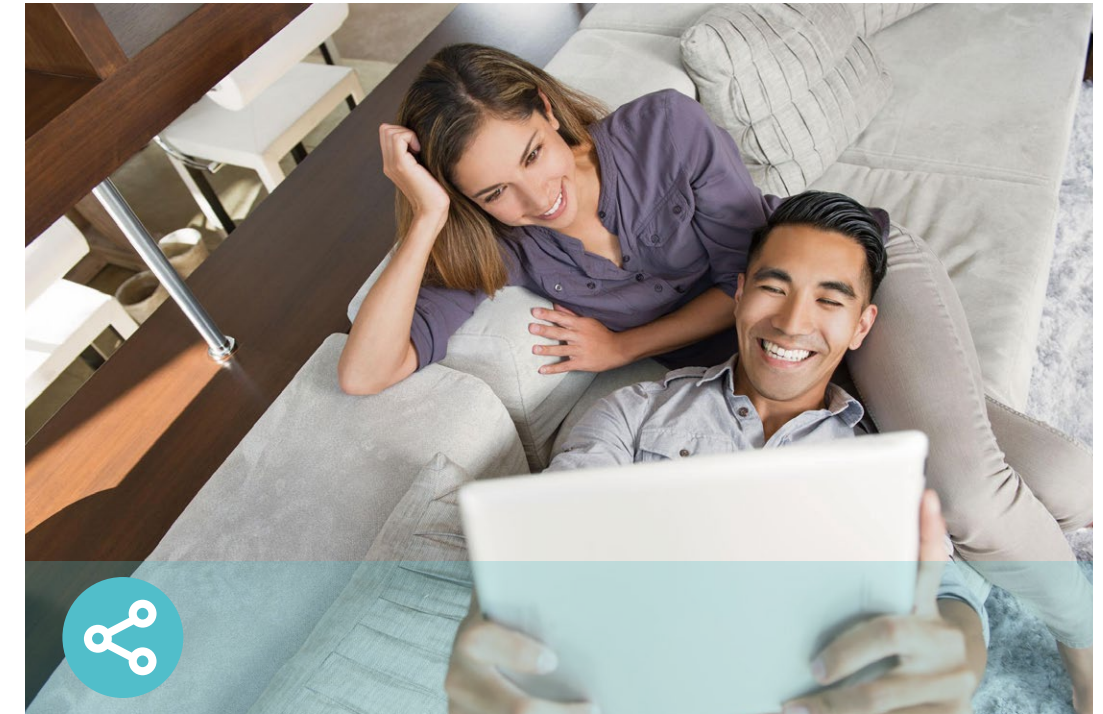
Ease of Use

- Intuitive Web UI – Ensures quick and simple installation without hassle
- Hassle-free Management with Tether App – Network management is made easy with the TP-Link Tether App, which is available on any Android or iOS device
- Fast Connection – Connect wireless devices securely with the press of WPS button
- Easy On/Off – Turn On/Off power with the Power On/Off button
- Wireless Schedule – Wireless Schedule lets you turn the Wi-Fi radio on or off based on a preset timetable



Security

- Guest Network – Keeps your main network secure by creating a separate network for friends and visitors
- Access Control – Establish a whitelist or blacklist to allow or block certain devices from accessing the internet
- Parental Controls – Manage when and how connected devices can access the internet
- VPN Server – OpenVPN, PPTP VPN, and IPSec VPN are supported, making it easy to set up a secure connection between your private network and the internet
- Firewall Security – Supports DoS, SPI Firewall, IP/MAC Address Binding, Service Filtering, IPv6 Firewall



Easy Sharing

- USB Port for Fast Sharing – Allows USB access to share your files and media locally and remotely
- Built-in Media Server – Allows you to play music, watch videos and view photos from any device on your network

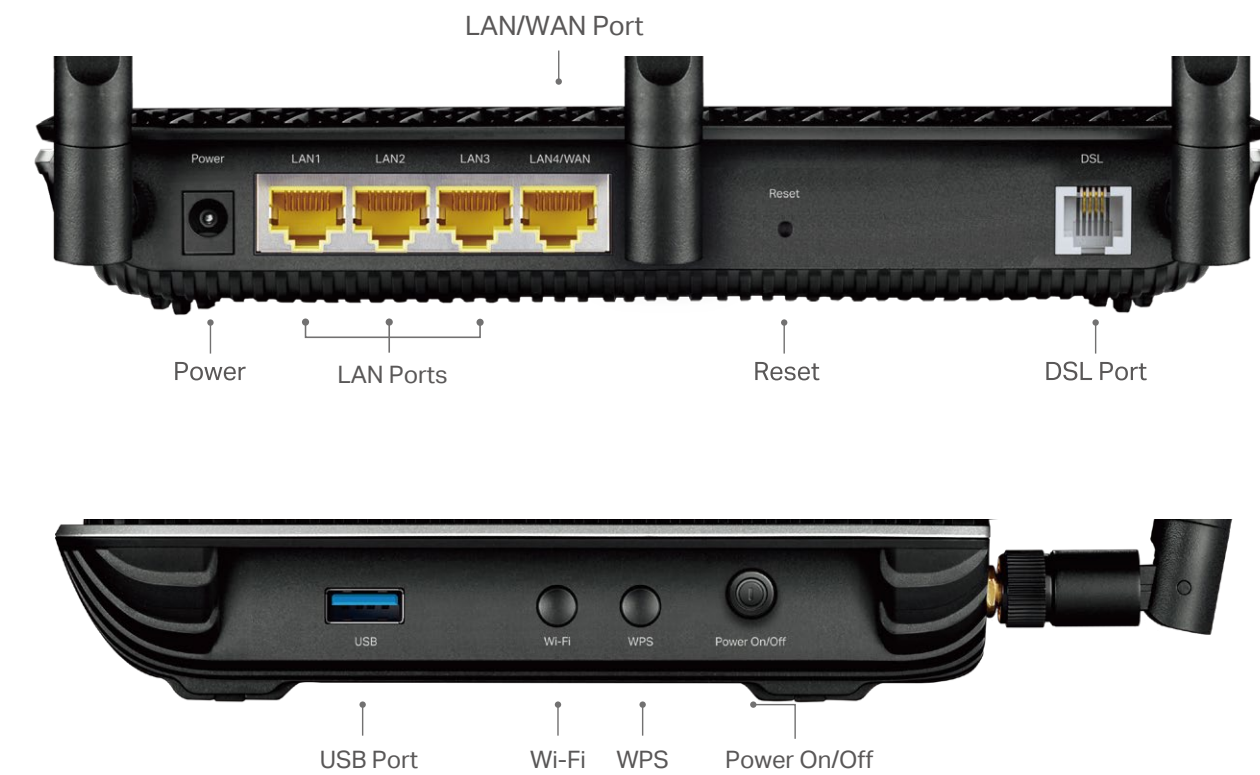
Specifications

Hardware

- Ethernet Ports: 3 Gigabit LAN Ports, 1 Gigabit LAN/WAN Port, 1 RJ11 Port, 1 USB Port
- Button: WPS Button, Reset Button, Power On/Off Button, Wi-Fi Button, LED On/Off Button
- External Power Supply: 12V/1.5A
- Dimensions (W x D x H): 8.5 × 6.5 × 1.4 in (216 × 164 × 36.8 mm)
- IEEE Standards: IEEE 802.3, IEEE 802.3u, 802.3ab
- VDSL2 Standards: ITU G.993.2, Up to 35b profile (POTS)
ITU-T G.993.5 (G.vector)
ITU-T G.998.4 (G.INP)
- ADSL Standards: Full-rate ANSI T1.413 Issue 2,
ITU-T G.992.1(G.DMT),
ITU-T G.992.2(G.Lite),
ITU-T G.994.1 (G.hs),
- ADSL2 Standards: ITU-T G.992.3 (G.DMT.bis),
- ADSL2+ Standards: ITU-T G.992.5
- Antenna Type: 3 External Dual Band Antennas + 1 Internal 5 GHz Antenna

Wireless

- Wireless Standards: IEEE 802.11ac/n/a 5 GHz, IEEE 802.11b/g/n 2.4 GHz
- Frequency: 2.4 GHz and 5 GHz
- Signal Rate: 1733 Mbps on 5 GHz, 300Mbps on 2.4 GHz
- Transmit Power: <20dBm (2.4 GHz), <23dBm (5 GHz)
- Wireless Function: Enable/Disable Wireless Radio, Wireless Statistics
- Wireless Security: 64/128-bit WEP, WPA/WPA2, WPA-PSK/WPA-PSK2 encryptions
- Wireless Schedule: Support 2.4 GHz and 5 GHz Wireless Schedule



Specifications

Software

- Operation Modes: VDSL/ADSL Modem Router, 3G/4G Router, Wireless Router
- DHCP: Server, Client, DHCP Client List, Address Reservation, DHCP Relay
- Port Forwarding: Virtual Server, Port Triggering, DMZ, ALG, UPnP
- Dynamic DNS: DynDns, NO-IP, TP-Link
- VPN: OpenVPN, PPTP VPN, IPsec VPN
- ATM/PPP Protocols: ATM Forum UNI3.1/4.0, PPP over ATM (RFC 2364), PPP over Ethernet (RFC2516), IPoA (RFC1577/2225), MERIPoE (RFC 1483 Routed), Bridge (RFC1483 Bridge), PVC – Up to 8 PVCs
- Security: NAT Firewall, SPI Firewall, Access Control, Service Filtering, Denial of Service (DoS), SYN Flooding, Ping of Death, IP and MAC Address Binding
- Advanced Functions: Parental Controls, Network Address Translation (NAT), Static Routing, RIP v1/v2 (optional), DNS Relay, DDNS, IGMP V1/V2/V3
- Management: Web Based Configuration (HTTP / HTTPS), Remote management, Command Line Interface, SSL for TR-069, SNMP v1/2c, Firmware Upgrade, Diagnostic Tools, Free Online Firmware Update
- Guest Network: 2.4 GHz Guest Network, 5 GHz Guest Network
- IPsec VPN: Supports up to 10 IPsec VPN tunnels
- Protocols: Supports IPv4 and IPv6

Others

- Certification: CE, RCM, RoHS
- System Requirements:
 - Microsoft Windows 98SE, NT, 2000, XP, Vista™ or Windows 7, 8, 8.1, 10, Mac OS, NetWare, UNIX or Linux
 - Internet Explorer 11, Firefox 12.0, Chrome 20.0, Safari 4.0, or other Java-enabled browser
 - Subscription with an internet service provider (for internet access)
- Environment
 - Operating Temperature: 0°C~40°C (32°F ~104°F)
 - Storage Temperature: -40°C~70°C (-40°F ~158°F)
 - Operating Humidity: 10%~90% non-condensing
 - Storage Humidity: 5%~90% non-condensing
- Package Contents
 - DSL Modem Router
 - External Splitter
 - RJ11 DSL Cable
 - RJ45 Ethernet Cable
 - Power Adapter
 - Quick Installation Guide



For more information, please visit

<https://www.tp-link.com/home-networking/dsl-modem-router/archer-vr2100/>

or scan the QR code left

Attention: This device may only be used indoors in all EU member states and EFTA countries.

Specifications are subject to change without notice. TP-Link is a registered trademark of TP-Link Technologies Co., Ltd. Other brands and product names are trademarks or registered trademarks of their respective holders. Copyright ©2019 TP-Link Technologies Co., Ltd. All rights reserved.

*Maximum wireless signal rates are the physical rates derived from IEEE Standard 802.11 specifications. Range, coverage, and maximum quantity of connected devices are based on test results under normal usage conditions. Actual wireless data throughput, wireless coverage, and quantity of connected devices are not guaranteed and will vary as a result of 1) environmental factors, including building materials, physical objects, and obstacles, 2) network conditions, including local interference, volume and density of traffic, product location, network complexity, and network overhead, and 3) client limitations, including rated performance, location, connection quality, and client condition.

*Use of MU-MIMO requires clients to also support MU-MIMO.

www.tp-link.com

TP-Link AC2100 Wireless MU-MIMO VDSL/ADSL Modem Router **Archer VR2100**